



**CONVEYOR BELTS  
AND COMPONENTS**

# Vasco

## Conveyor belts and components

---

Vasco Global is a Hong Kong based wholesaler of Conveyor Belts and Conveyor Belts components. As part of a German-Swiss Group, we source globally since decades from dozens of suppliers and deliver to customers worldwide with quality products for economical cost.

Our core product portfolio covers a wide range of conveyor belts, wear protection, conveyor belt components, glue and repair kits. The extended portfolio includes special solutions and equipment for customers in the conveyor belt service and crusher maintenance industry.

As a one-stop-wholesale partner to our customer, we believe that we will be successful if our customers are successful.

### Customer Benefits at a Glance:

#### **Order efficiency**

We offer a one-stop interface for customers, with a targeted quotation response of 24 hours for a wide range of products.

#### **Cost effectiveness**

Our optimized services minimize order handling costs, while our product portfolio offers the right quality for the right price to our customers.

#### **Quality**

We offer our own inhouse and independent quality inspection for products made in China, adding an additional layer of quality assurance for our customers.

#### **Deep expertise**

Through access to 30+ years of technical expertise via our affiliated German-based Conveyor Belt Service business we truly understand our customer's needs.

# Vasco Index of products

## Conveyor belts

---

Textile conveyor belts .....	06
Oil resistant conveyor belts .....	07
Sliding conveyor belts .....	07
Heat resistant conveyor belts .....	08
Flame-retardant conveyor belts .....	08
Chevron belts .....	09
RipStop/Breaker conveyor belts .....	17
Steel cord belts .....	18
Sidewall belts .....	19
Textile elevator belts .....	23
Steel cord elevator belts .....	23
PVC/PU light conveyor belts .....	23
FDA approved belts.....	24
Special conveyor belts .....	24

## Wear protection & Pulley lagging

---

Wear protection 40, 60 and 60 Super .....	26
Wear protection Para and Para Super .....	27
Wear protection Prema Super .....	28
Ceramic wear protection sheets .....	29
Pulley lagging .....	30

## Conveyor components

---

Impact bars .....	32
Dust sealing .....	33
Skirting rubber .....	34
Sandwich rubber scrapers .....	35
Pulley scrapers .....	36
PU-pulley scrapers .....	36
Secondary scrapers (hard metal) .....	36
Drive pulleys .....	37
Return pulleys .....	37
Snub pulleys .....	37
Cleats .....	38
Sidewalls .....	39
Gurtec rollers, roller stations, brackets .....	40

## Bonding systems & Repair material

---

Permaflex .....	44
Helmitin® Cold bonding systems, steel primer, cleaner .....	46
Repair tapes .....	50
Repair sheets .....	50
Repair patches .....	51

## Other products

---

Service Business equipment .....	52
Screen mesh .....	52



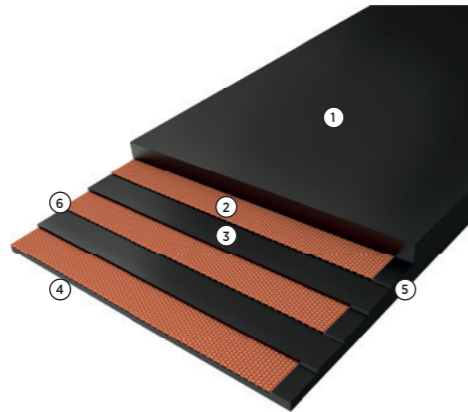
# Textile conveyor belts



Vasco textile conveyor belts made of EP or PP-textiles are used for conveying bulk material. Due to the high tensile strength and stability, the belts are suitable for long distance conveyors. Vasco conveyor belts are strictly manufactured according to DIN 22102. The Vasco product portfolio includes diverse qualities and assemblies as well as cross-rigid XE-fabric.

## Belt model

1. Top cover
2. Textile fabric
3. Skim rubber
4. Bottom cover
5. Moulded Edge
6. Cut Edge



## Application areas

- Mining industry
- Chemical sector
- Iron and steel industry
- Ports and transshipment operations
- Wood industry
- Coal-fired power plants
- Recycling industry
- Sand and gravel industry
- Stone quarries
- Cement plants

## Technical data

Carcass	Tensile strength (N/mm <sup>2</sup> )	Textile layers	Thickness of covers (mm)		Belt width (mm)
			Top	Bottom	
EP/PP	200	1 - 3	1 - 40	0 - 40	300 - 9,000
	250				
	315				
	400	2 - 6			
	500				
	630				
	800				
	1,000				
	1,250				
	1,500				
	1,600				
3,150					

## Quality

	Y-quality	X-quality	Z-quality	N-quality	W-quality
Tensile strength	≥ 20 N/mm <sup>2</sup>	≥ 24 N/mm <sup>2</sup>	≥ 15 N/mm <sup>2</sup>	≥ 16 N/mm <sup>2</sup>	≥ 18 N/mm <sup>2</sup>
Abrasion	≤ 150 mm	≤ 120 mm	≤ 150 mm	≤ 120 mm	≤ 90 mm
Elongation at break	≥ 400 %	≥ 450 %	≥ 350 %	≥ 400 %	≥ 400 %

# Oil resistant conveyor belts



Grease, mineral oil and solvents may cause damages to normal textile conveyor belts. Even a short exposure to these substances may effect a swelling of the cover rubber. Therefore, Vasco offers oil resistant belts. The special rubber compound of the material reduces wear and increases the efficiency of the production. Ambelt's® product portfolio comprises the qualities MOR (medium oil resistant) and OR (oil resistant). The product specifications are also available in cross-rigid XE-fabric. All belt widths up to 3,000 mm are available from stock.

## Application areas

- Chemical industry
- Fertilizer industry
- Iron and steel industry
- Feed industry
- Grain silo
- Glass industry
- Wood industry
- Metal processing industry
- Recycling industry

## Technical data

	MOR-quality	OR-quality
tensile strength	≥ 14 N/mm <sup>2</sup>	≥ 12 N/mm <sup>2</sup>
abrasion	≤ 200 mm	≤ 200 mm
elongation at break	≥ 350 %	≥ 300 %

# Sliding conveyor belts



Sliding conveyor belts are operated on sliding tables and are always used wherever conveyors do not work with a rolling structure for technical reasons. Vasco sliding belts are always manufactured according to DIN 22102. Compared to standard conveyor belts, they have a lower friction between the belt and the framework, since the bottom of the belt is made of smooth running textile instead of rubber. This minimizes the wear on the conveyor belt and increases customer efficiency. Vasco also provides this product in oil resistant quality and cross-rigid XE specification.

## Application areas

- Airports
- Wood industry
- Food industry
- Parcel services
- Recycling plants
- Packaging industry

# Heat resistant conveyor belts



Heat resistant conveyor belts are highly resistant to hot material such as cement, steel or sand. The cover rubber of a conveyor belt consists of a special rubber compound featuring high adhesive strength, elongation at break and excellent thermal protection force. The use of different elastomers results in different heat resistances. Heat resistant conveyor belts from Vasco are manufactured according to DIN 22102 and are able to convey material with a constant temperature of 200 °C - for short runs up to 250 °C.

### Application areas

- Chemical sector
- Fertilizer industry
- Iron and steel industry
- Foundries
- Glass industry
- Metalworking industry
- Waste incineration
- Cement plants

i Also available as Breaker/RipStop version.

### Technical Data

	Heat 150 °C	Heat 180 °C	Heat 220 °C
Tensile strength	≥ 15 N/mm	≥ 12 N/mm	≥ 12 N/mm
Abrasion	≤ 250 mm	≤ 250 mm	≤ 250 mm
Elongation at break	≥ 350 %	≥ 350 %	≥ 350 %
Const. operating temp.	≤ 150 °C	≤ 180 °C	≤ 220 °C

# Flame-retardant conveyor belts



One of the major risks during a production process is fire. Flame-retardant conveyor belts may therefore be used to reduce or even avert damages to persons and property in case of fire.

### Application areas

- Mining industry
- Iron and steel industry
- Ports and transshipment operations
- Power plants
- Tunnel construction

### Vasco provides you with the quality according to your demand:

- K-Quality: flame-retardant with cover plate
- S-Quality: flame-retardant with or without cover plate
- V-Quality: self-extinguishing
- EN 14973 Class A: Underground mining / tunnel construction

### Technical data

	K-Quality	S-Quality	V-Quality	EN14973 Class A
Tensile strength	≥ 20 N/mm	≥ 20 N/mm	≥ 17 N/mm	≥ 15 N/mm
Abrasion	≤ 200 mm	≤ 200 mm	≤ 175 mm	≤ 200 mm
Elongation at break	≥ 400 %	≥ 400 %	≥ 400 %	≥ 350 %

# Chevron belts



For gradient angles of more than 18°, bulk material cannot be transported using ordinary textile conveyor belts. Chevron conveyor belts are used instead.

As there are many different application areas, flow rates and operational specifications, Vasco provides an abundant portfolio of open and closed profile types. Individual client requests regarding the height or type of profile, can be realized by tailor-made solutions.

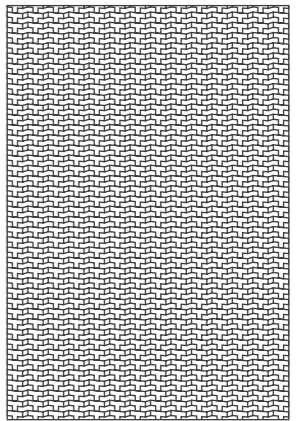
i Vasco also provides chevron belts in RipStop/Breaker version, as well as in cross-rigid, heat resistant, flame-retardant and oil resistant quality.

### Application areas

- Ports and transshipment operations
- Wood industry
- Smelteries
- Coal-fired power plants
- Coal industry
- Agriculture
- Recycling industry
- Sand and gravel industry
- Stone quarries
- Cement plants

### Type Supergrip (Rough-Top)

Chevron width (mm)	Belt width (mm)
up to 1,300	up to 1,300



### Type Herringbone

Chevron width (mm)	Belt width (mm)
up to 1,300	up to 1,300



# Chevron belts



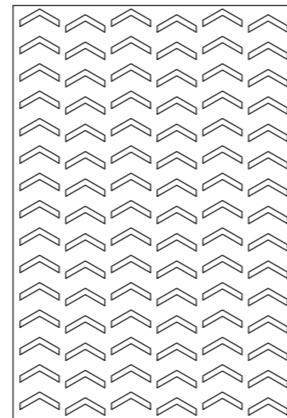
## Type V3, V5, V6 and V10

Chevron height (mm)	Chevron width (mm)	Chevron pitch (mm)	Belt width (mm)
3	600	100	600 - 800
5	620	100	620 - 820
5	300 - 1,200	100	300 - 1,200
6	500 - 1,000	80	500 - 1,200
6	500 - 1,200	150	500 - 1,200
6	650	100	650 - 900
6	1,000	100	1,000 - 1,200
6	1,200	100	1,200 - 1,600
10	600 - 1,400	76	600 - 1,400



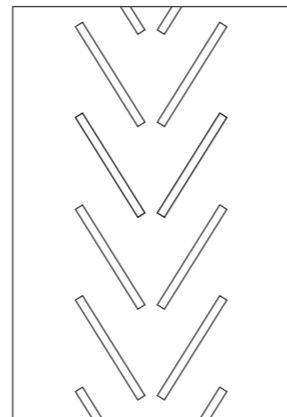
## Type Multi-V6

Chevron height (mm)	Chevron width (mm)	Chevron pitch (mm)	Belt width (mm)
6	600 - 1,400	76	600 - 1,400



## Type V15 - Standard open

Chevron height (mm)	Chevron width (mm)	Chevron pitch (mm)	Belt width (mm)
15	300	146	400 - 550
	380	250	450 - 850
	385	250	400 - 1,000
	450	225	600 - 650
	600	328	700 - 1,200
	600	250	650 - 1,000
	750	250	800 - 1,200

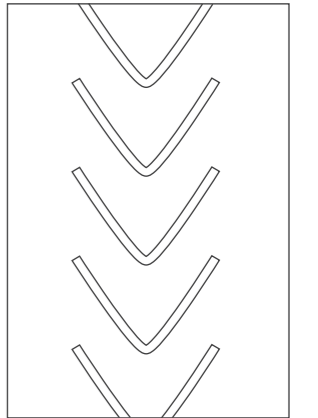


# Chevron belts



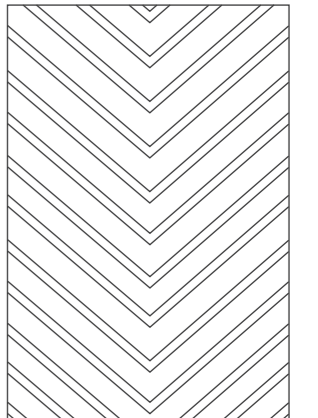
## Type V15 - Standard closed

Chevron height (mm)	Chevron width (mm)	Chevron pitch (mm)	Belt width (mm)
15	330	250	400 - 800
	450	300	500 - 1,000



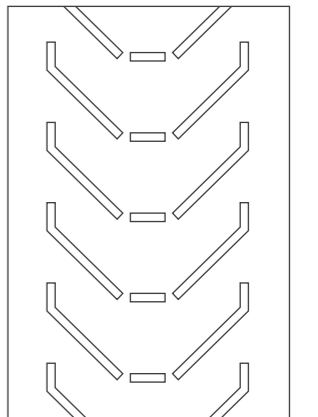
## Type V15 - Wide

Chevron height (mm)	Chevron width (mm)	Chevron pitch (mm)	Belt width (mm)
15	300 - 1,200	125	300 - 1,200



## Type C15 / 500

Chevron height (mm)	Chevron width (mm)	Chevron pitch (mm)	Belt width (mm)
15	500	340	550 - 800

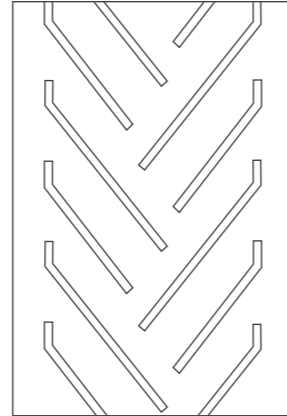


# Chevron belts



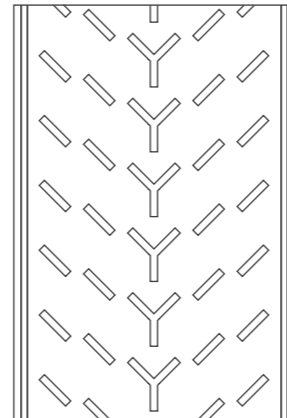
## Type C15 / 750

Chevron height (mm)	Chevron width (mm)	Chevron pitch (mm)	Belt width (mm)
15	750	300	900 - 1,000



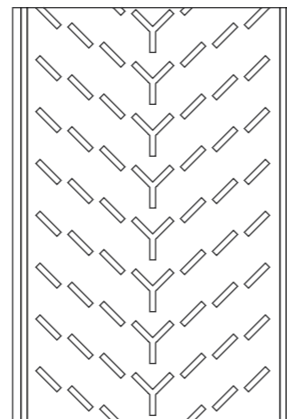
## Type Y15 / 890


Chevron height (mm)	Chevron width (mm)	Chevron pitch (mm)	Belt width (mm)
15	890	190	1,000 - 1,500



## Type Y15 / 980

Chevron height (mm)	Chevron width (mm)	Chevron pitch (mm)	Belt width (mm)
15	980	190	1,000 - 1,500



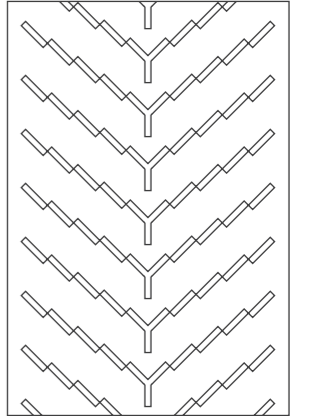
 Special version with Breaker/RipStop available from stock.

# Chevron belts



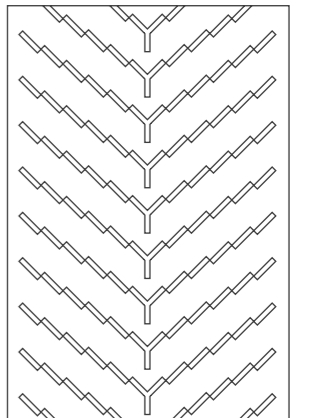
## Type Y15 / 1090

Chevron height (mm)	Chevron width (mm)	Chevron pitch (mm)	Belt width (mm)
15	1,090	190	1,200 - 1,400



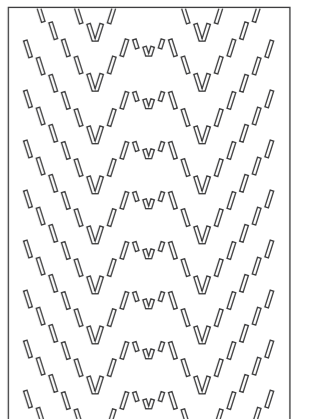
## Type Y15 / 1290

Chevron height (mm)	Chevron width (mm)	Chevron pitch (mm)	Belt width (mm)
15	1,290	190	1,400 - 1,500



## Type Y15 / 1700 oder 1790

Chevron height (mm)	Chevron width (mm)	Chevron pitch (mm)	Belt width (mm)
15	1,700 oder 1,790	190	1,800 - 2,200

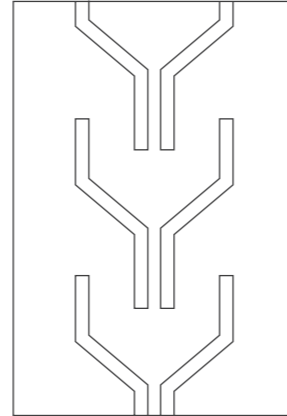


# Chevron belts



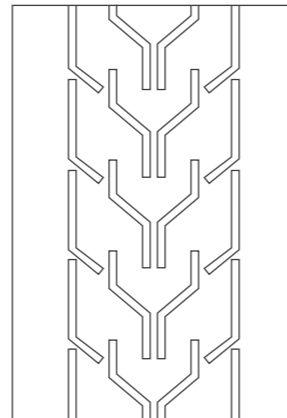
## Type Y17 / 300

Chevron height (mm)	Chevron width (mm)	Chevron pitch (mm)	Belt width (mm)
17	300	330	400 - 800



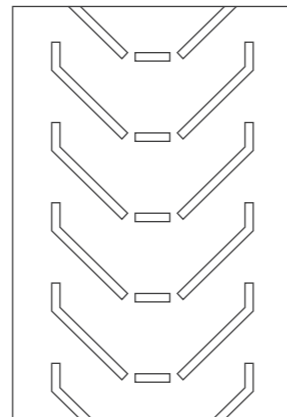
## Type Y17 / 440 - 950

Chevron height (mm)	Chevron width (mm)	Chevron pitch (mm)	Belt width (mm)
17	440	330	500 - 1,000
	550	330	600 - 1,000
	630	330	700 - 1,000
	750	330	850 - 1,200
	950	330	1,050 - 1,400



## Type C25

Chevron height (mm)	Chevron width (mm)	Chevron pitch (mm)	Belt width (mm)
25	450	330	500 - 1,000
	550	330	600 - 1,000
	750	330	850 - 1,200

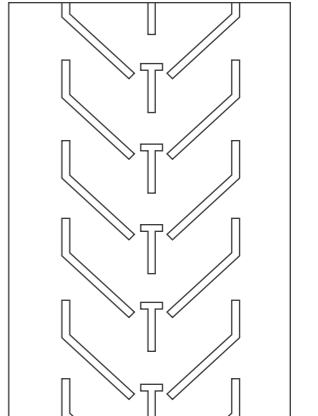


# Chevron belts



## Type CT25

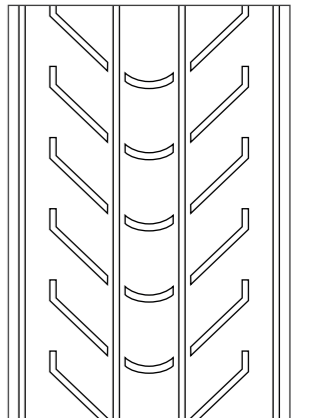
Chevron height (mm)	Chevron width (mm)	Chevron pitch (mm)	Belt width (mm)
25	450	250	500 - 800
	550	250	600 - 1,200
	450	330	600 - 800
	550	330	600 - 800



## Type CL25

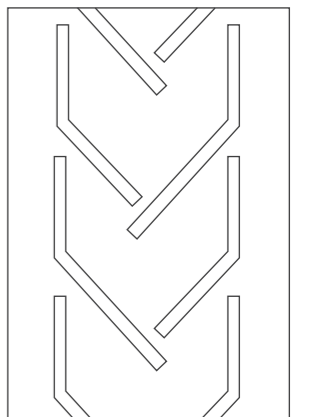
Chevron height (mm)	Chevron width (mm)	Chevron pitch (mm)	Belt width (mm)
25	1,180	400	1,200
	1,365	500	1,400

*i* Special version with Breaker/RipStop available from stock.



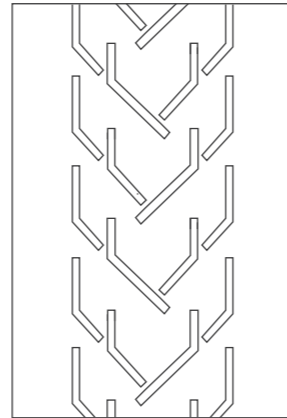
## Type C32 / 460

Chevron height (mm)	Chevron width (mm)	Chevron pitch (mm)	Belt width (mm)
32	460	330	550 - 1,000



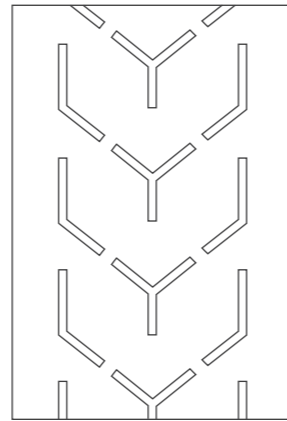
### Type C32 / 580 - 750

Chevron height (mm)	Chevron width (mm)	Chevron pitch (mm)	Belt width (mm)
32	580	330	600 - 800
	630	330	650 - 900
	750	330	850 - 1,400



### Type Y32

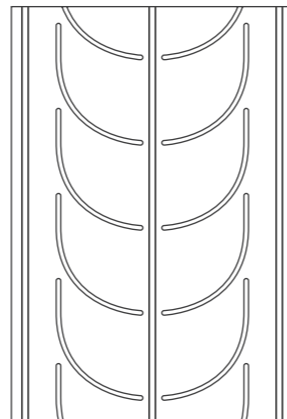
Chevron height (mm)	Chevron width (mm)	Chevron pitch (mm)	Belt width (mm)
32	450	330	500 - 800
	600	330	700 - 1,000
	800	330	900 - 1,200
	1,365	330	1,400 - 1,600



**i** Special version in 10:3 with Breaker/RipStop available from stock.

### Type U35

Chevron height (mm)	Chevron width (mm)	Chevron pitch (mm)	Belt width (mm)
35	730	330	800, 1,000, 1,200



## RipStop/Breaker conveyor belts



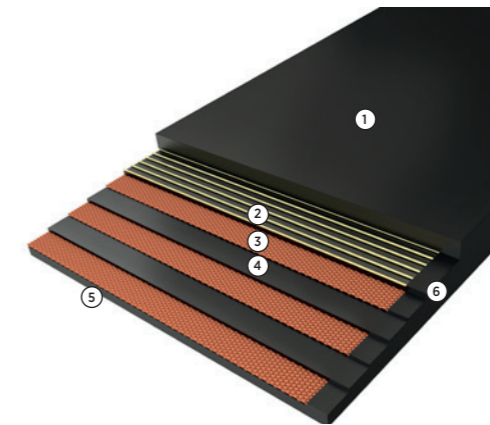
Sharp-edged goods and the impact of goods under unfavourable conditions may cause expensive longitudinal rips and breakthroughs in the belt. In order to avoid this, Vasco offers special steel breaker belts featuring a cutting protection layer (RipStop) on top of the textile carcass. Upon enquiry Vasco offers diverse types (i.e. textile breaker conveyor belts) and qualities.

### Application areas

- Iron and steel industry
- Foundries
- Stone quarries
- Cement plants

### Belt model

1. Top cover
2. RipStop layer
3. Textile fabric
4. Skim rubber
5. Bottom cover
6. Moulded Edge



### Technical data

Conveyor belt type	Textile type	Tensile strength (N/mm <sup>2</sup> )	Number of textile layers	Thickness upper and lower cover plate (mm)	Cover quality	Width on stock (mm)
Steel breaker/ RipStop	EP	400 - 1,350	3 - 6	5S + 3	X, Y, W, OR, MOR, K, V, S	up to 2,400
				8S + 3		
				10S + 3		

**i** RipStop/Breaker conveyor belts are also available in cross-rigid and heat resistant quality.

# Steel cord conveyor belts



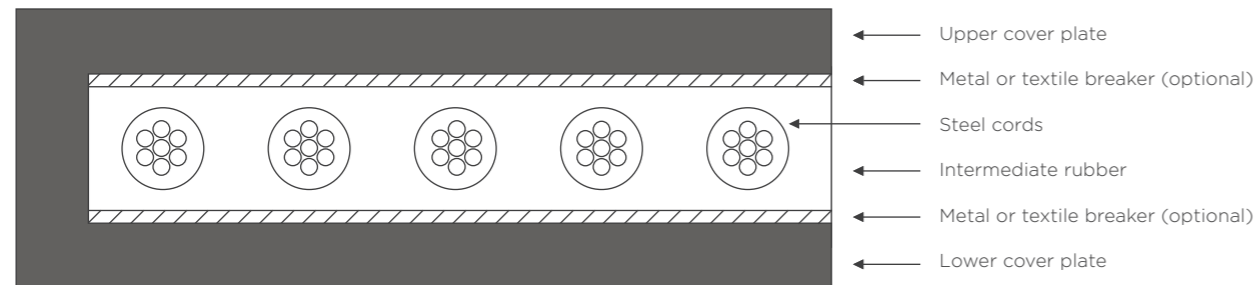
Vasco Steel cord conveyor belts are used to transport high volume flows over long distances. Thanks to the high tensile strength, these belts are suitable for rough working conditions.

Vasco Steel cord conveyor belts are strictly produced according to DIN 22131 and ISO 15236 standards. The standard product portfolio comprises the qualities X, Y, K, V, HR150 and HR200.

### Application areas

- Mining and salt extraction
- Iron and steel industry
- Ports and transshipment operations
- Coal mines
- Power plants
- Surface mining

### Belt model



### Technical data (other strength class on request)

	ST630	ST800	ST1,000	ST1,250	ST1,600	ST1,800	ST2,000	ST2,500	ST3,150	ST3,500	ST4,000	ST4,500	ST5,000	ST5,400
Tensile strength (N/mm <sup>2</sup> )	630	800	1,000	1,250	1,600	1,800	2,000	2,500	3,150	3,500	4,000	4,500	5,000	5,400
Max. cord diameter (mm)	3.3	3.5	4.1	4.9	5.6	5.6	5.6	7.2	8.1	8.6	8.9	9.7	10.9	11.3
Cord distance (mm) +/- 1,5	13.5	13.5	12	14	15	13	12	15	15	15	15	16	17	17
Min. thickness of covers (mm)	4	4	4	4	6	6	6	8	8	8	8	8	8	8
Width (mm) +/-														
Tolerance (mm) +/-														
	Number of steel cords													
500	5	36	36	40	34	-	-	-	-	-	-	-	-	-
650	7	47	47	52	44	-	-	-	-	-	-	-	-	-
800	8	58	58	64	55	50	58	62	50	50	50	50	46	43
1,000	10	73	73	81	69	64	73	78	64	64	64	64	59	55
1,200	10	87	87	97	84	77	88	97	77	77	77	77	71	66
1,400	12	102	102	114	98	90	104	114	90	90	90	90	84	78
1,600	12	117	117	131	112	104	120	131	104	104	104	104	96	90
1,800	14	131	131	147	126	117	136	147	117	117	117	117	109	102
2,000	14	146	146	164	141	130	150	164	130	130	130	130	121	113
2,200	15	161	161	181	155	144	166	181	144	144	144	144	134	125
2,400	15	175	175	197	169	157	182	197	157	157	157	157	146	137
2,600	15	-	-	214	184	170	197	214	170	170	170	170	159	149
2,800	15	-	-	231	198	184	213	231	184	184	184	184	171	161
3,000	15	-	-	247	212	197	228	247	197	197	197	197	184	172
3,200	15	-	-	264	227	210	243	264	210	210	210	210	196	184

# Sidewall belts

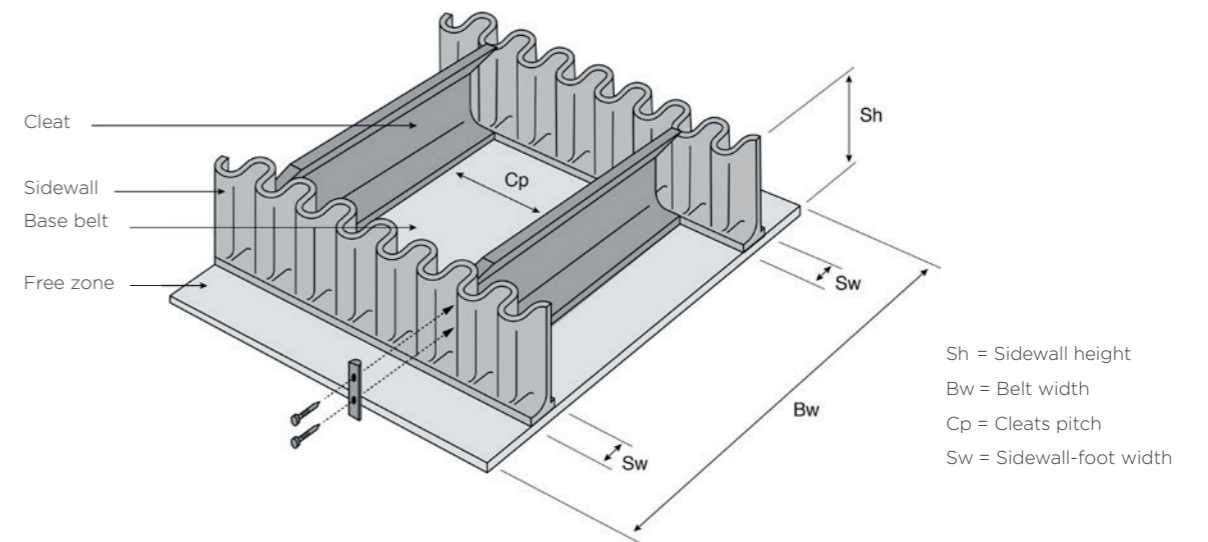


Sidewall belts are suitable for horizontal to vertical transport of bulk material up to 90°. This means that transfer points can be reduced in the operating process, resulting in energy and capital-saving working methods. Vasco offers its customers a large portfolio of possible combinations of cleats and sidewalls in various heights up to 500 mm. Vasco will supply sidewall belts to your specifications. Sidewalls and cleats can be manufactured with re-inforced textile layers connected with screws if required. The basic belt is available in cross-rigid quality or steel cord versions. Base belts with textile traverse reinforcement are recommended for light to medium-duty applications. For particularly heavy loads, base belts with steel cable traverse reinforcement are the optimum choice.

### Application areas

- Mining
- Iron and steel industry
- Foundries
- Port and handling
- Coal and biomass power plants
- Recycling industry
- Sand and gravel industry
- Stone quarries

### Sidewall belt model



Sh = Sidewall height  
 Bw = Belt width  
 Cp = Cleats pitch  
 Sw = Sidewall-foot width

### Vasco supplies sidewall belts in the following rubber qualities:

- Highly abrasion-resistant
- Oil and fat resistant
- Heat resistant
- Flame retardant

*i* Sidewall belts are always custom-made products. Please contact the Vasco-Team for receiving an individual offer that meets your requirements.

# Sidewall belts



## Overview

- Hot vulcanisation of cleats and sidewalls on the base belt
- Maximum cleat and sidewall height 500 mm
- Maximum width of belt 4500 mm
- Delivered as endless belt or open length

### Technical data: Base belts

	Term	Model	Type	Standard cover thickness*(mm)	Min. pulley ø (mm)
Textile	XE		250/2	4:2	200
			400/3	4:2	315
	XE+1		250/2+1	3:1,5	200
			315/2+1		250
			400/3+1	4:2	315
			500/3+1		400
	XE+2		400/3+2	4:2	315
			500/3+2		400
			630/4+2		500
			800/5+2	5:3	630
			1,000/5+2		800
			1,250/5+2		1,000
	XE-SC+2		400/3+2	4:2	315
			500/3+2		400
630/4+2			500		
800/5+2			5:3	630	
1,000/5+2				800	
1,250/5+2				1,000	
Steel	XST-SC+2		1,600	8:8	1,250
			2,000		
			2,500		1,400
			3,150		

\*other cover thicknesses available on request

# Sidewall belts



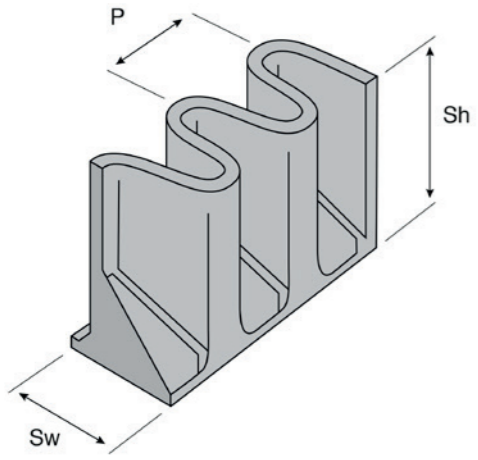
## Technical data: Cleats

Model	Type	Height (mm)	Foot width (mm)
 C	C55	55	75
	C75	75	90
	C90	90	110
	C110	110	110
 T	T40	40	70
	T55	55	80
	T75	75	100
	T90	90	110
	T110	110	110
	T140	140	160
 TC	T180	180	160
	TC75	75	85
	TC90	90	110
	TC110	110	110
	TC140	140	150
	TC180	180	150
 TCS	TC230	230	160
	TC280	280	160
	TCS230	230	105
	TCS280	280	105
	TCS360	360	200
	TCS470	470	200

# Sidewall belts



## Technical data: Sidewall

Model	Type	Sh / Height (mm)	Sw / Foot width (mm)	P / Pitch (mm)	Weight (kg/m)
	Standard	40	35	25	0.58
		40	50	40	1.03
		60			1.55
		80			1.82
		100			2.20
		120			2.65
	Textile reinforced	120	75	63.2	3.20
		160			4.76
		200			6.45
		240			7.50
		250			6.37
		280			8.90
		300			9.33
	HD	300	100	83	12.10
		400			18.72
		500			16.80

## Belt steering wheels

For optimal belt alignment we recommend to use the Vasco belt steering wheels. The edge-free zone of the belt is located on or within the groove. This allows a reliable and gentle belt guidance.

## Technical data

		Outside diameter	300 mm
		Inside diameter	115 mm
		Total width	80 mm
		Groove width	50 mm
		Groove depth	40 mm

# Textile elevator belts



Vasco Elevator belts with EP-layers are produced according to strict regulations of DIN 22102 and DIN 22104 standards. Elevator belts are highly qualified for upright conveyance of bulk material and therefore optimize transportation in limited spaces. Special designs according to customer requirements can be realized at any time. The elevator belts can be delivered ready to install including mechanical fasteners, bucket protection sheets as well as punched holes for bucket installation.

## Application areas

- Iron foundries
- Coal-fired power plants
- Agriculture
- Food production
- Recycling industry
- Cement plants

# Steel cord elevator belts



For high-performance elevators, such as those found in the cement industry, steel cord conveyor belts are used in various designs. Vasco is generally using heat and ageing resistant rubber compounds for their steel cord elevator belts. Special designs according to customer requirements can be realized at any time. The elevator belts can be delivered ready to install including mechanical fasteners, bucket protection sheets as well as punched holes for bucket installation.

## Application areas

- Coal-fired power plants
- Recycling industry
- Cement plants

# PVC/PU light conveyor belts



Vasco Light duty conveyor belts are generally used for short to medium transportation distances and allow transportation of bulk material also in narrow production areas, e. g. in the food industry or in logistic centres. Vasco offers a solution for almost every application area. The product portfolio complies light conveyor belts made of PU, PVC and other material. If required the PVC/PU light conveyor belts can be supplied with cleats and sidewalls, with or without textile layers as well as in oil resistant or FDA-approved quality.

## Application areas

- Glass industry
- Wood industry
- Food industry
- Logistic centres and parcel services
- Recycling industry
- Brick factories
- Sugar industry

## FDA approved belts

---



Vasco FDA approved belts are mainly used in the sugar and food industry but also in the colour and paint production.

The Vasco-Team is looking forward to advise you regarding the suitable belt according to your specifications and requirements.

### Application areas

- Sugar and food industry
- Paint and varnish production

## Special conveyor belts

---



Next to the extensive portfolio of standard belts, Vasco also supplies a variation of special belts according to customer specifications and requirements. The Vasco-Team is happy to provide support for your technical enquiries.

## Wear protection & Pulley lagging

---

## Wear protection 40, 60 and 60 Super



Vasco delivers a wide product range of different wear protection products.

### Overview

- Protects equipment and construction parts as well as components against wear
- Vasco offers wear resistant rubber sheets in different qualities and thicknesses between 2 - 50 mm
- On demand with or without bonding layer, in rolls or cut to size, depending on individual requirements
- Customer specific colours, roll length and width available on request and short notice

### Specification of Vasco standard wear protection

	Unit	40°	60°	60° Super
<b>General information</b>				
Colour*	-	Red	Black	Black
Roll length*	m	10	10	10
Roll width*	mm	1,400 / 2,000	1,400 / 2,000	1,400 / 2,000
<b>Elastomers</b>				
Polymers	-	NR	NR/SBR	NR/SBR
Spec. weight	g/cm	1.11	1.13	1.10
Hardness	Shore A	40° (+-5°)	60° (+-5°)	60° (+-5°)
<b>Technical characteristics</b>				
Tensile strength	kg/cm	170	150	210
Elongation at break	%	650	450	450
Abrasion	mm (at 5N)	< 90	< 130	< 90
Operating temp.	°C	-40 until +70	-40 until +70	-40 until +70

 \* Available in customer specific colours, roll length and width.

## Wear protection Para and Para Super



Vasco supplies wear protection rubber Para in two different qualities with or without bonding layer.

### Application examples

- Discharge hoses e.g. in the cement industry
- Compensators

### Overview of advantages

- Extra abrasion-resistance
- Outstanding elongation at break values

### Technical data

	Unit	Para	Para Super
<b>General information</b>			
Colour*	-	Beige	Caramel
Roll length*	m	10	10
Roll width*	mm	1,400 / 2,000	1,400 / 2,000
<b>Elastomers</b>			
Polymers	-	NR	NR
Spec. weight	g/cm	1.1	0.97
Hardness	Shore A	45° (+-5°)	35° (+-5°)
<b>Technical characteristics</b>			
Tensile strength	kg/cm	180	170
Elongation at break	%	650	750
Abrasion	mm (at 5N)	< 80	< 95
Operating temp.	°C	-40 until +70	-40 until +70

 \* Available in customer specific colours, roll length and width.

## Wear protection Prema Super



Prema Super is a wear protection rubber of highest quality. It features a high elongation at break and tear resistance as well as an excellent weather resistance. Vasco Prema Super is available with or without bonding layer.

### Technical data

	Unit	Prema Super
<b>General information</b>		
Colour*	-	Yellow
Roll length*	m	10
Roll width*	mm	1,400 / 2,000
<b>Elastomers</b>		
Polymers		NR
Spec. weight	g/cm	1.08
Hardness	Shore A	40° (+-5°)
<b>Technical characteristics</b>		
Tensile strength	kg/cm	200
Elongation at break	%	650
Abrasion	mm	< 85
Operating temp.	°C	-40 until +70

 \* Available in customer specific colours, roll length and width.

## Ceramic wear protection sheets



Mosaic ceramic lagging offers a very efficient wear protection for light to medium duty application areas.

The ceramic sheets must be buttjoined and on bigger areas they need to be staggered. Minimal abrasion allows extended lifecycle. The combination of the bonding layer, the rubber back and the ceramic mosaic is designed to reduce noise emission during operation.

At standard areas aluminum oxide ceramic with a purity of 92 % is applied. The back of the ceramic wear protection sheets has a special contact layer that makes installation much easier. Vasco recommends Helmitin® Cold bonding systems to ensure best interplay of products.

Ceramic wear protection sheets are available on stock in the size 500 x 500 x 8 (4+4) mm. Custom made rubber or ceramic thicknesses can be supplied upon request.

### Application examples

- Bunkers
- Drains
- Chutes
- Cyclones

### Technical data

	Unit	Standard
Measure of lagging sheet	mm	500x500
Mosaic ceramic	mm	20x20
Ceramic thickness	mm	4
Total thickness	mm	8
Hardness of rubber	Shore A	60°

# Pulley lagging



Rubber friction lagging is used for drive elements to ensure high friction and thus minimize belt slippage and a straight running conveyor belt during operation.

Pulley lagging from Vasco consists of high-quality synthetic rubber compounds which makes it the first choice for excellent wear and corrosion protection. Furthermore the pulley lagging can be supplied with or without a special bonding layer on one side to ensure durable adhesion on the steel surface of the pulley. Vasco recommends Helmitin® Cold bonding systems to ensure best interplay of products.

Pulley lagging is available on stock in the measurements 2,000 x 10,000 mm and in the thickness of 8, 10 and 12 mm. Customer specific thicknesses and colours are available upon request.

## Available pulley lagging qualities:

- Oil resistant
- Red / Blue / White
- FDA
- Ceramic
- Corundum coating

## Technical data

Name / colour	Type	Polymers	Spec. weight (g/cm <sup>3</sup> )	Hardness +-5° (Shore A)	Tensile strength (N/mm <sup>2</sup> )	Elongation (%)	Abrasion (mm <sup>3</sup> )	Bonding layer	Width (mm)
Pulley lagging black 65	Mini diamond / Maxi diamond	SBR	1.13	60	15	450	< 130	ffi	1,400 1,800 2,000
Pulley lagging black 60 oil	Mini diamond	SBR / NBR	1.30	65	10	450	< 220	ffi	
Pulley lagging red 40	Mini diamond	NR	1.11	40	17	650	< 90	ffi	
Pulley lagging blue 50	Mini diamond	SBR	1.15	55	15	450	< 150	ffi	
Pulley lagging white 60 L + oil	Mini diamond	NBR / NR	1.15	55	14	750	< 180	ffi	
Pulley lagging white 60 FDA + oil	Mini diamond	NBR	1.18	60	8	250	< 250	ffi	
Ceramic	12 x 385 or 500 x 10.000 mm	SBR / ceramic	-	65	15	450	< 90	ffi	385 or 500
Corundum coating	14 x 480 x 1900 mm	SBR / corundum	-	60	-	-	-	ffi	480

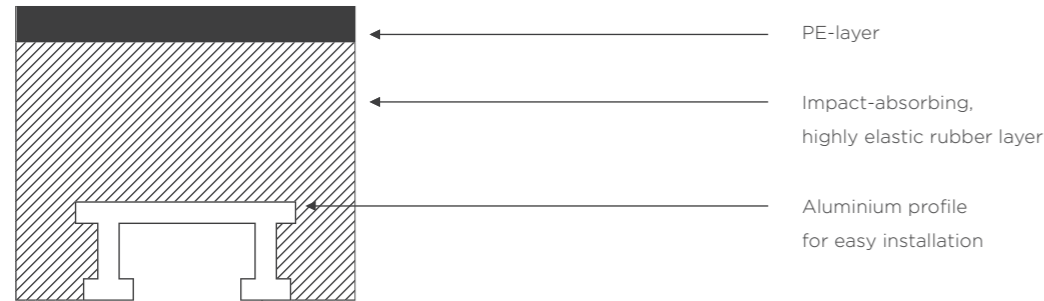
# Impact bars



Conveyor belts are subject to constant stress from dust, sharp objects or heavy bulk goods. The consequences can be inadequate belt guidance, expensive repairs, long downtimes and significant productivity losses. The service life of your conveyor belt can be increased by installing durable impact bars in your conveyor system. Impact bars from Vasco are manufactured to a high standard and consist of an energy-efficient PE-layer with low friction, an impact-absorbing rubber core as well as an aluminium profile for easy installation.

Vasco also delivers the appropriate bolts, washers and nuts in the sizes M16 and M12.

## Impact bar model



## Types available on stock

Type	Dimensions (W x H x L)
Type 50	100 x 50 x 1,220 mm
Type 75	100 x 75 x 1,220 mm
Type 100	100 x 100 x 1,220 mm
Type 50 XL	100 x 50 x 1,500 mm
Type 75 XL	100 x 75 x 1,500 mm
Type 100 XL	100 x 100 x 1,500 mm

# Dust sealing



Dust sealing protects your equipment from dust and dirt. No matter if screening machines, feeding trays or slides, this extra-light, flexible and elastic product may serve you to run your production flow smoothly and more economically. Dust sealing from Vasco does not only protect from dust and dirt, but also reduces noise effectively.

## Overview of advantages

- Protects conveyor systems from dust and dirt at transition points
- Reduces noise emissions
- Your choice: normal or heat resistant quality

## Technical data

	Unit	Standard	Heat resistant
<b>General information</b>			
Colour*	-	Black	Black
Roll length*	m	20	20
Roll width*	mm	1,400	1,400
<b>Elastomers</b>			
Polymers	-	NR	EPDM
Spec. weight	g/cm	1.00 (+/- 0.03)	1.11
Hardness	Shore A	40° (+/- 5°)	35°
<b>Technical characteristics</b>			
Tensile strength	kg/cm	200	90
Elongation at break	%	600	750
Abrasion	mm	< 100	< 95
Operating temp.	°C	-40 until +95	-30 until +120

*i* \* Available in customer specific colours, roll length and width.

# Skirting rubber




Skirting rubber is used for tranquilizing the material and for sealing the feeding point. The skirting rubber avoids the drop-down of material in the conveying system periphery.

Vasco provides skirting rubber rolls in various colours, qualities and thicknesses from 5 to 30 mm and widths from 60 to 200 mm. Vasco also offers premium-quality skirting rubber for extreme operating conditions.

## Technical data

	Unit	Red	Black
<b>General information</b>			
Colour*	-	Red	Black
Thickness	mm	4 until 30	4 until 30
Roll width*	mm	60 until 300	60 until 300
Roll length*	m	10 / 20	10 / 20
<b>Elastomers</b>			
Polymers		NR	NR / Recl.
Spec. weight.	g/cm	1.20	1.27
Hardness	Shore A	45° (+-5°)	65° (+-5°)
<b>Technical characteristics</b>			
Tensile strength	kg/cm	150	100
Elongation at break	%	550	350
Abrasion	mm	< 120	< 250
Operating temp.	°C	-40 until +70	-40 until +70

 \* Available in customer specific colours, roll length and width.

# Sandwich rubber scrapers



Sandwich rubber scrapers manufactured in a hard-soft-hard combination, should be used for belts running at low speed and for material which is easy to scrape off the belt.

The outer 65° Shore rubber has the hardness to clean the belt, while the 40° Shore core provides the elasticity required to absorb vibrations. Common rubber scrapers are directly available from stock in the thickness 15, 20 and 30 mm. Other dimensions can be manufactured on request.

## Technical data

	Unit	Black / Green / Black	Black / Red / Black		
<b>General information</b>					
Colour	-	Black	Green	Black	Red
<b>Elastomers</b>					
Polymers	-	NR/BR	NR	NR/SBR	NR
Spec. weight	g/cm	1.17	1.05	1.17	1.05
Hardness	Shore A	65°	40°	65°	40°
<b>Technical characteristics</b>					
Tensile strength	kg/cm	150	180	150	180
Elongation at break	%	450	550	450	600
Abrasion	mm	< 200 (10N)	< 120 (5N)	< 200 (10N)	< 120 (5N)
Operating temp.	°C	-40 until +70	-40 until +70	-40 until +70	-40 until +70

## Scrapers



Scrapers serve for the general cleaning of the belt. By installing scrapers you may avoid material to get stuck to your belt surface which will increase the lifecycle of your belt remarkably. Furthermore, the pollution of the equipment is reduced to a minimum.

### Application areas

- Asphalt mixing plants
- Plaster and cement plants
- Glass industry
- Recycling industry
- Sand and gravel industry
- Stone quarries
- Brick factories

## Pulley scrapers

- Application at light to medium-heavy and especially for high endurance conveyor belt systems
- Suitable for crowned drums
- High flexibility due to PU and hard metal segments
- Also suitable for reverse operations
- Belt speed up to 5 m/s
- Especially for very sticky material or difficult and confined spaces

## PU-pulley scrapers

- High-quality PU segments for extraordinary high endurance
- Suitable for crowned drums and for reverse operations
- High cleaning performance due to flexible PU segments
- Belt speed up to 5m/s
- Especially for badly damaged belt surfaces and PVC belts
- Extra-suitable for confined spaces thanks to compact design

## Secondary scrapers (hard metal)

- This standard belt scraper from Vasco is used for light to strong pollutions of the conveyor belt
- Flexible installation options
- Particularly low installation height

## Drive pulleys



Drive pulleys guide the engine power via the transmission into the drum and via friction into the belt, while also guiding the conveyor belt from the upper run to the lower run.

Vasco sells particularly robust and easy-to-maintain drive pulleys to ensure the longevity of your conveying system. The specification of the drive pulley depends on several parameters such as the area of application, the amount of material being transported, the running speed of the belt and the belt specification. The Vasco-Team will happily advise you on the right selection of the drive pulley.

## Return pulleys



Return pulleys guide the belt from the lower run to the upper run, and do not have any driving function.

Vasco sells particularly robust and easy-to-maintain return pulleys to ensure the longevity of your conveying system. The specification of the return pulley depends on several parameters such as the area of application, the amount of material being transported, the running speed of the belt and the belt specification. The Vasco-Team will happily advise you on the right selection of the return pulley.

## Snub pulleys



Snub pulleys are conveying system components that are individually designed and manufactured in different sizes and for different conveying requirements.

Snub pulleys are used to increase the wrap angle of the conveyor belt to reduce the pulling force of the belt. Snub pulleys can therefore optimize the cost of your conveying system, since they reduce the belt tension which means that a conveyor belt with a lower belt strength can be used for the same purpose.




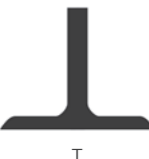

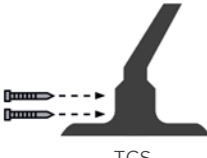
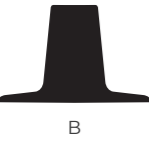
To improve the friction between the drum and the belt and to increase the wear protection, Vasco recommends to coat the drive pulley. Depending on the application either rubber, ceramic or PU are recommended as coating material, which are also part of the Vasco product portfolio.

# Cleats



Vasco offers different types of cleats (C, T, TC, TCS, B) as well as different heights (20 - 470 mm) for multi-faceted applications.

## Technical data

Model	Type	Height (mm)	Foot width (mm)
 C	C55	55	75
	C75	75	90
	C90	90	110
	C110	110	110
 T	T40	40	70
	T55	55	80
	T75	75	100
	T90	90	110
	T110	110	110
	T140	140	160
	T180	180	160
 TC	TC75	75	85
	TC90	90	110
	TC110	110	110
	TC140	140	150
	TC180	180	150
	TC230	230	160
 TCS	TC280	280	160
	TCS230	230	105
	TCS280	280	105
	TCS360	360	200
 B	TCS470	470	200
	B20	20	55
	B25	25	35
	B30	30	80
	B40	40	80
	B60	60	80
	B75	75	80
	B110	110	110
	B140	140	140

# Sidewalls

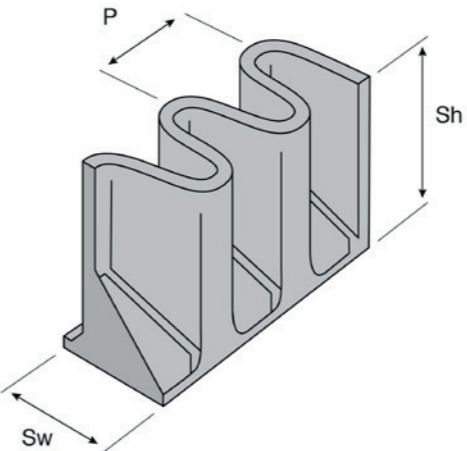


To increase the conveying volume of the belt, sidewalls are often vulcanised to each side of the conveyor belt. These sidewalls are exposed to high forces. In the transverse direction the sidewalls have to carry the weight of the conveyed material, while in the longitudinal direction the sidewalls are stretched and compressed, in particular at the deflection area. Because of this, sidewalls from Vasco are characterized by a wear-resistant and highly flexible rubber quality. Depending on the application, conveying capacity and customer requirements, Vasco offers different heights of sidewalls (40 to 500 mm) as well as fabric reinforced sidewalls. Vasco recommends a fabric insert for any sidewalls higher than 140 mm. If the sidewalls need to be screwed to the cleats, a fabric insert is necessary.

## Available sidewall qualities:

- Standard
- Oil resistant
- Acid resistant
- Flame retardant
- Heat resistant

## Technical data

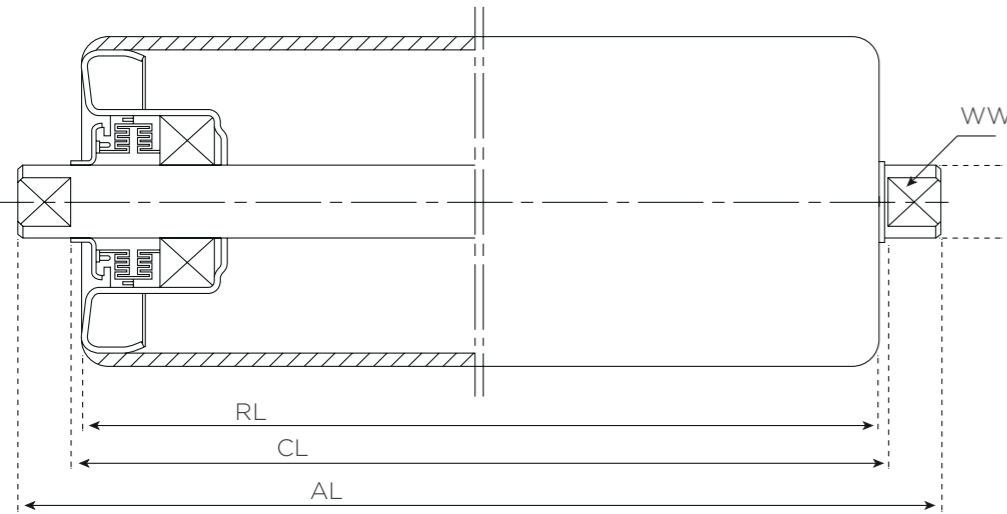
Model	Type	Sh / Height (mm)	Sw / Foot width (mm)	P / Pitch (mm)	Weight (kg/m)
	Standard	40	35	25	0.58
		40	50	40	1.03
		60			1.55
		80			1.82
		100			2.20
	120	2.65			
	Textile reinforced	120	75	63.2	3.20
		160			4.76
		200			6.45
		240			7.50
250		6.37			
280		8.90			
HD	300	100	83	9.33	
	400			12.10	
	500			18.72	
					16.80

# Gurtec rollers, roller stations, brackets



Vasco delivers rollers by Gurtec in all variations and dimensions for various applications. Furthermore, Vasco offers roller stations with height of 60 and 100 mm and brackets. Standard products are available on stock.

## Roller model



RL = Roll length  
 CL = Clamping length  
 AL = Axle length  
 WW = Wrench width

# Gurtec rollers



## Technical data: Roller Type 6204

Ø	Categorization of belt width (mm)			Measure (mm)			Axle length (mm)	Mass (kg)	
	3 parts	2 parts	1 part	RL	CL	AL		Turn. parts	Total
63,5*1,75	500	-	-	200	206	226	15/10	0.92	1.56
	650	400	-	250	256	276	15/10	1.06	1.82
	800	500	-	315	321	341	15/10	1.23	2.15
	1,000	650	-	380	386	406	15/10	1.40	2.48
	1,200	800	-	465	471	491	15/10	1.63	2.92
	-	-	400	500	506	532	15/13	1.72	3.11
	1,600	1,000	500	600	606	632	15/13	1.99	3.63
	2,000	-	650	750	756	782	15/13	2.25	4.14
	-	-	800	950	956	982	15/13	2.92	5.42
-	-	1,000	1,150	1,156	1,182	15/13	3.45	6.45	
88,9*2,9	500	-	-	200	206	226	15/10	1.77	2.41
	650	400	-	250	256	276	15/10	2.08	2.84
	650	400	-	250	256	276	14/10	2.08	2.84
	800	500	-	315	321	341	15/10	2.48	3.40
	800	500	-	315	321	341	14/10	2.48	3.40
	1,000	650	-	380	386	406	15/10	2.88	3.96
	1,200	800	-	465	471	491	15/10	3.40	4.69
	-	-	400	500	506	532	15/13	3.62	5.00
	1,400	-	-	530	536	556	15/10	3.80	5.27
	1,600	1,000	500	600	606	632	15/13	4.23	5.87
	2,000	-	650	750	756	782	15/13	5.15	7.16
	-	-	800	950	956	982	15/13	6.38	8.88
-	-	1,000	1,150	1,156	1,182	15/13	7.62	10.61	
108*3,25	500	-	-	200	206	226	15/10	2.32	2.96
	650	400	-	250	256	276	15/10	2.74	3.50
	800	500	-	315	321	341	15/10	3.28	4.20
	1,000	650	-	380	386	406	15/10	3.83	4.91
	1,200	800	-	465	471	491	15/10	4.54	5.83
	1,600	1,000	500	600	606	632	15/13	5.68	7.31
	2,000	-	650	750	756	782	15/13	6.93	8.94
	-	-	800	950	956	982	15/13	8.61	11.11
	-	-	1,000	1,150	1,156	1,182	15/13	10.29	13.28

*i* Further specifications upon request.



# Permaflex



Permaflex is universally applicable and suitable for the repair of conveyor belts, rubber coating and linings as well as sealing of gaps. Breakthroughs and longitudinal cracks may be repaired up to any length. Permaflex consists of a two-component polyurethane and features a fast processing time. After 30 minutes the processed area can be sanded and reworked. Depending on the application, it can be applied by hand or as a spray system.

## Overview

- Suitable for repair of conveyor belts, rubber coatings, linings and sealing of gaps
- Two-components polyurethane system
- Short processing time
- Fast, clean and flexible
- Dry to the touch after two minutes
- May be ground and re-worked after 30 minutes
- Free of any volatile substances
- Shock-resistant, highly resistant to abrasion
- Maximum hardness of 60° shore A
- Processing by hand or with the help of a spray system

## Technical data

Colour	Black
Elastomere	Polyurethane
Tensile strength	≥ 400%
Hardness	60 Shore A
Abrasion	≤ 120 mm
Elongation at break	1,629 PSI

## Range of products

Permaflex mechanical spray gun	200 ml
Permaflex double cartridge	200 x 200 ml
Permaflex mixing cannula	200 ml
Permaflex pneumatic spray gun	750 ml
Permaflex double cartridge	750 x 750 ml
Permaflex mixing cannula	750 ml
Permaflex special Primer	125 ml bottle
Permaflex special Primer	250 ml bottle

# Permaflex



## Application steps



1. Thoroughly clean the working surface



2. Roughen the working surface



3. Prepare with specific PF-84 Primer



4. Remove the buckle and fasten the mixing tip



5. Place the cartridge in the spray gun



6. Apply Permaflex repair material



7. Spackle if necessary



8. Spot may be re-worked after 30 minutes

# Helmitin® Cold bonding systems, steel primer, cleaner

Vasco offers the entire product family of Helmitin® cold bonding systems, including Helmitin® 14030. This bonding system has the special feature that the solvent used is non-flammable and yet free of trichloroethylene.

## Technical data

	Helmitin® 14030	Helmitin® 14026
Base	Polychloroprene	Polychloroprene
Colour	Black	Black
Viscosity	Approx. 3,700 mPas	Approx. 3,500 mPas
Density	Approx. 1.42 g/cm	Approx. 0.85 g/cm
Hardener additive	5% Swift® hardener (9502)	5% Swift® hardener (9503)
Pot life	Approx. 3 hours	Approx. 1-3 hours
Manner of application	Filler, paintbrush	Filler, paintbrush
Consumption	300 - 400 g/m	300 - 400 g/m
Airing time	10 - 15 minutes	10 - 15 minutes
Contact bonding time	Approx. 30 minutes	Approx. 30 minutes
Setting time	Approx. 24 hours	Approx. 24 hours
Permitted storage time	Approx. 12 months	Approx. 12 months
Storage and transport conditions	Well closed at temp. not below 10 °C	Well closed at temp. not below 10 °C
Sensitivity to cold	Yes, defrostable	Yes, defrostable
Flammability	No, hardly combustible	Combustible

In cooperation with:



# Helmitin® Cold bonding systems, steel primer, cleaner

This product is a stock item and is used for rubber conveyor belts and wear protection linings.

## Technical data

Product typew	Product	Properties	Container
Adhesive	Helmitin® 14030	Hardly flammable, trichloroethylene-free	1 kg can 3 kg can
	Helmitin® 14026	Flammable, with benzene	0.6 kg can 2.5 kg can
	Swift® col 9254 Black	Highly flammable, thinner: Helmitin® 676/2	15 kg can
	Swift® hardener 49502	Hardly flammable, for Helmitin® 14030	50 g bottle 150 g bottle
Hardener	Swift® hardener 49503	Flammable, for Helmitin® 14026	30 g bottle 50 g bottle 150 g bottle
Primer	Swift® prime 2903	Metal primer	0.7 kg can
Cleaner / thinner	Helmitin® 676/2	Flammable, trichloroethylene-free	4 kg can
	Swift® clean 9041	Hardly flammable, thinner & cleaner	6 kg can

In cooperation with:



# Helmitin® Cold bonding systems, steel primer, cleaner

Product overview - for rubber conveyor belts and steel linings

## Adhesives / Primers

Product	Application				Hardener (5%)		Properties		
	Belt manufacturing		Lining of steel rollers	Lining of tanks	Swift® hardener 9502	Swift® hardener 9503	Hardly flammable	Highly flammable	Other Properties
	Sidewall	Belt							
Helmitin® 14030	√	√	√	√	√		√		Good processability at low temperatures. Toluene and trichloroethylene free. Suitable to be used underground.
Helmitin® 14026	√	√	√		√	√		√	High initial and final bonding strength. Toluene free.
Helmitin® 14031	√	√	√					√	Easy to process at low temperatures. Very high initial bonding strength. Toluene free.
Swift®prime 2903			√	√				√	Very good adhesion to roughened steel. Good combination with above mentioned adhesives. Toluene free.
Swift®col 9254 black								√	Very good adhesion of EPDM profiles on cement. Toluene free.

## Thinners / Cleaners

Product	Used for				Properties		
	Helmitin® 14030	Helmitin® 14026	Helmitin® 14031	Swift® col 9254 black	Hardly flammable	Highly flammable	Other properties
Swift® clean 9041	√				√		Suitable to be used in mining. Free of trichloroethylene.
Helmitin® 676/2		√	√	√		√	Free of toluene and chlorinated hydrocarbons.

In cooperation with:



# Helmitin® Cold bonding systems, steel primer, cleaner

Product overview - for PVC/PU conveyor belts and power transmission belts

## Adhesives / Primers

Product type	Product	Hardener (5 %)			Properties
		Helmitin® 49631	Helmitin® 500 FB	Hardener F1	
Adhesive	Helmitin® 3530/18	√	√	√	Good penetration thanks to low viscosity, low activation temperature, very good adhesive strength.
Adhesive	Helmitin® 3113/05	√	√	√	High initial bonding strength.
Adhesive	Helmitin® GPV	√	√	√	High viscosity, very high initial strength, very high heat resistance.
Primer	Helmitin® 3114/05	√	√	√	Low viscosity primer for highly absorbent materials.
Primer	Helmitin® 15208	√	√	√	Primer for polyurethane and PVC materials.
Primer	Helmitin® T/FL				One-component halogenating solution for the preparation of rubber materials.

## Thinners / Cleaners

Product	Used for					Application
	Helmitin® 3530/18	„Helmitin® 3113/05“	„Helmitin® 3114/05“	„Helmitin® GPV“	Helmitin® 15208	
Helmitin® 694	√	√	√	√	√	Cleaning of PVC and polyurethane.

In cooperation with:



## Repair tapes



### Technical data

Product	Type	Width (mm)	Thickness (mm)	Length (m)	Packing unit
Repair tape - RB	Without textile layer	35	1.7	10	1 roll
		50	1.7		
		70	2.2		
		100	2.2		
		150	3.		
		220	3.2		
		300	3.2		
Repair tape - RBG	With textile layer	100	3.6	10	1 roll
		150	4.6		
		220	4.6		
		300	4.8		

## Repair sheets



### Technical data

Product	Width (mm)	Thickness (mm)	Length (m)	Packing unit
Repair compensation plate - RP	500	1.5	10	1 roll
		2		
		3		
		4		
Repair compensation plate - RA/2VKS	500	0.5	10	1 roll
		1.5		
		3		

## Repair patches



### Technical data

Product	Type	Dimensions (mm)	Thickness (mm)	packing unit
Repair patch round shape - RUF	Without textile layer	∅ 120	3	5
Repair patch diamond shape - RAF	Without textile layer	160 x 130	2.3	5
		250 x 200	2.3	5
		380 x 270	2.3	5
Repair patch diamond shape - RAFG	With textile layer	160 x 130	3.7	5
		250 x 200	3.7	5
		380 x 270	3.7	5
Repair patch rectangle shape - REF	Without textile layer	100 x 240	2.3	10
		220 x 320	2.3	10
		300 x 500	2.3	10
Repair patch rectangle shape - REFG	With textile layer	100 x 240	3.7	10
		220 x 320	3.7	10
		300 x 500	3.7	10

## Other products

---

### Service business equipment

- Winding bock
- Belt Stand
- Cutting table
- Side-door container 20ft (FEU)
- Side-door container 40ft (TEU)
- Working and safety mats

### Screen mesh

- Material: #45, High Carbon Steel
- Design: Woven crimping heavy duty wire mesh
- Edge: Flat Edge, Hooked Edge
- Dimensions:
  - Wire Apperture: 2.5 mm – 60 mm
  - Outer dimensions
  - Length: 1,350 – 2,200 mm
  - Width: 1000 – 1600 mmOther dimensions on request

### Special applications

- Chemical liner and sheets with and without bonding layer
- Heat resistant and fire resistant lagging with and without bonding layer
- Other conveyors as e.g. pipe conveyor
- And more

Vasco Global Ltd. (H.K.)  
Level 7, K11 Atelier  
Victoria Dockside, 18 Salisbury Rd.  
Tsim Sha Tsui, Hong Kong  
Hong Kong SAR

[contact@vasco-global.com](mailto:contact@vasco-global.com)

For inquiries:  
[inquiry@vasco-global.com](mailto:inquiry@vasco-global.com)  
WhatsApp: +852 5320 9082